

OFFICE SPACE
FOR SUBLEASE

1700 Palm Beach Lakes Blvd

1700 Palm Beach Lakes Boulevard
West Palm Beach, FL 33401

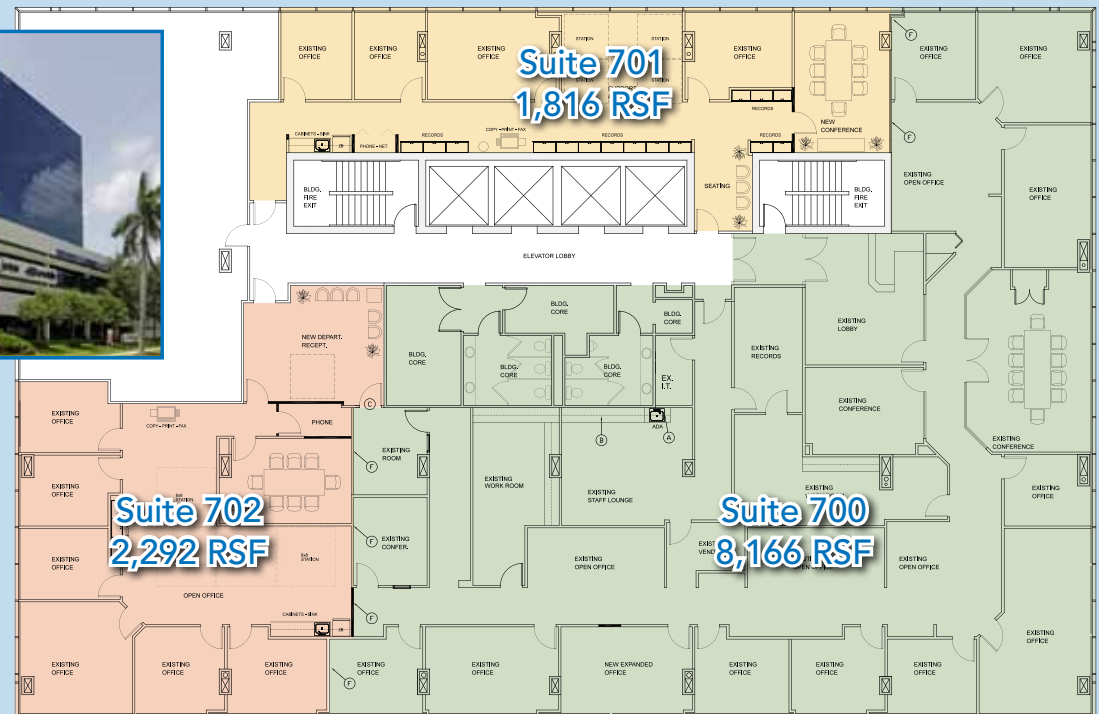
SUBLEASE Space Available Aggressive Rate

PROPERTY HIGHLIGHTS

- Class A building
- Bank branch on-site
- Contemporary building design
- 24/7 card-key access
- On-site property management
- Covered parking

7TH FLOOR AVAILABILITY

- Full seventh floor available including several perimeter offices, conference room and kitchen
- 12,274 RSF- divided:
 - Suite 700 - 8,166 SF
 - Suite 701 - 1,816 SF
 - Suite 702 - 2,292 SF
- High-end finishes
- Aggressive rate
- Sublease term through 8/14/2015



LICENSED REAL ESTATE BROKER
110 S.E. 6th Street
Suite 3000
Fort Lauderdale, FL 33301

Phone: 954.607.6649
Fax: 954.767.5910

Walter K. Robinson

305.808.7818

walter.robinson@transwestern.net

Jennifer Lee

954.607.6651

jennifer.lee@transwestern.net

Laurel Oswald

954.607.6649

laurel.oswald@transwestern.net

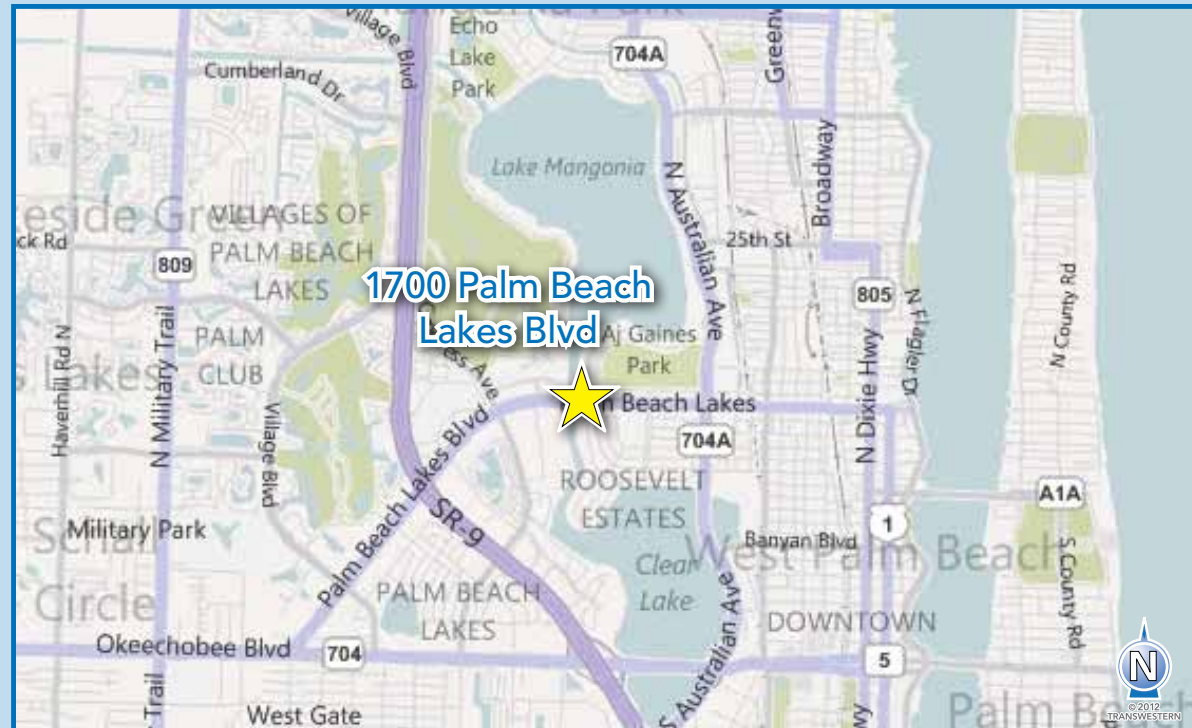
The information provided herein was obtained from sources believed reliable; however, Transwestern makes no guarantees, warranties, or representations as to the completeness or accuracy thereof. The presentation of this property is submitted subject to errors, omissions, change of price or conditions, prior sale or lease, or withdrawal without notice. Copyright © 2011 Transwestern.

1700 Palm Beach Lakes Blvd

SUBLEASE Space Available Aggressive Rate

LOCATION HIGHLIGHTS

- Centrally located just east of I-95
- Great access
- Minutes to Downtown Palm Beach and the courthouses
- Across from the Palm Beach Mall
- Abundant selection of restaurants, shops, hotels, and business services within walking distance



LICENSED REAL ESTATE BROKER
110 S.E. 6th Street
Suite 3000
Fort Lauderdale, FL 33301

Phone: 954.607.6649
Fax: 954.767.5910

Walter K. Robinson

305.808.7818
walter.robinson@transwestern.net

Jennifer Lee

954.607.6651
jennifer.lee@transwestern.net

Laurel Oswald

954.607.6649
laurel.oswald@transwestern.net